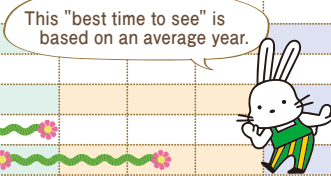


# Hanamiyama Guide Map

A Utopia In Fukushima-Hanamiyama  
Colorful flowers herald the changing of the seasons  
Beautiful flowers will be in their full glory and cheer you up.

| Main Flower Varieties and Best Time to see Them  | January              | February             | March                | April                | May                  | June                 | July                 | August               | September            | October              | November             | December             |
|--|----------------------|----------------------|----------------------|----------------------|----------------------|----------------------|----------------------|----------------------|----------------------|----------------------|----------------------|----------------------|
|  | Early<br>Mid<br>Late | Early<br>Mid<br>Late | Early<br>Mid<br>Late | Early<br>Mid<br>Late | Early<br>Mid<br>Late | Early<br>Mid<br>Late | Early<br>Mid<br>Late | Early<br>Mid<br>Late | Early<br>Mid<br>Late | Early<br>Mid<br>Late | Early<br>Mid<br>Late | Early<br>Mid<br>Late |
| Autumnalis   |                      |                      |                      |                      |                      |                      |                      |                      |                      |                      |                      |                      |
| Japanese Allspice  |                      |                      |                      |                      |                      |                      |                      |                      |                      |                      |                      |                      |
| Plum • Japanese Witch Hazel • Japanese Cornel • Buttercup Winterhazel                  |                      |                      |                      |                      |                      |                      |                      |                      |                      |                      |                      |                      |
| Tokai Cherry • Higan Cherry • Forsythia • Japanese Quince • Magnolia                   |                      |                      |                      |                      |                      |                      |                      |                      |                      |                      |                      |                      |
| Okame Cherry • Taiwan Cherry • Somei-Yoshino Cherry • Miyabi Cherry • Amanogawa Cherry |                      |                      |                      |                      |                      |                      |                      |                      |                      |                      |                      |                      |
| Flowering Peach • Ukon Cherry • Kanzan Cherry • Gyoikou Cherry • Tulip                 |                      |                      |                      |                      |                      |                      |                      |                      |                      |                      |                      |                      |
| Pearlbush • Deshojo Maple • Japanese Snowball • Satsuki Azalea • Azalea                |                      |                      |                      |                      |                      |                      |                      |                      |                      |                      |                      |                      |
| Hydrangea  |                      |                      |                      |                      |                      |                      |                      |                      |                      |                      |                      |                      |
| Goldband Lily • Water Lily   |                      |                      |                      |                      |                      |                      |                      |                      |                      |                      |                      |                      |
| Plumbed Cockscomb  |                      |                      |                      |                      |                      |                      |                      |                      |                      |                      |                      |                      |



**Autumnalis (Jugatsu-Zakura)**

■ Prunus Subhirtella

White to pink red flowers bloom from autumn to spring. A feature of this variety is the double-flowered blossoms, with larger flowers blooming in greater numbers in spring.

**Japanese Allspice (Robai)**

■ Chimonanthus Praecox

Small yellow flowers bloom through the snow season from December to February. The petals have a shiny lustre and a strong aroma.

**Plum (Ume)**

■ Prunus Mume

Blooms early to signal the arrival of spring, with a strong aroma. There are many varieties with different colors such as white, pink, and red.

**Japanese Witch Hazel (Mansaku)**

■ Hamamelis Japonica

Yellow blossoms of this flowering tree signal the coming spring early. Because it blooms during the deciduous season, the flowers, although small, stand out well.

**Japanese Cornel (Sanshuyu)**

■ Cornus Officinalis

The shape of the flowers resemble fireworks which bloom with small yellow flowers.

**Buttercup Winterhazel (Hyuga-Mizuki)**

■ Corylopsis pauciflora

1 to 3 light yellow flowers, like ears of grain, bloom from March to April. It is often called "Hime-Mizuki" at the florist.

**Tokai Cherry**

■ Prunus Takenakae

This cultivated cherry variety has five-petaled flowers with a dark base that fades to a pink red at the tips. Many flowers bloom along its small branches.

**Higan Cherry**

■ Prunus Subhirtella

Known as a "Kohigan Cherry" which blooms in a scattering pattern with 2 to 3 small flowers. There are a lot of this variety planted around Hanamiyama.

**Forsythia (Rengyo)**

■ Forsythia Suspensa

The branches stand up straight and are full of yellow flowers with 4 petals each.

**Japanese Quince (Boke)**

■ Chaenomeles speciosa

It has been grown in Japanese gardens tree for a long time. It blooms with red or white clumps of flowers.

**Yulan Magnolia (Haku-Mokuren)**

■ Magnoliaceae Magnolia Denudata

Large, white, refined flowers that bloom around the same time as the other varieties of magnolia.

**Okame Cherry**

■ Prunus Incamp

This variety is a hybrid of the Taiwan and Mame Cherries. It was bred in England and named "Okame" (representing a traditional beautiful woman) and introduced back to Japan.

**Taiwan Cherry (Kanhi-Zakura)**

■ Prunus campanulata

Usually found in temperate areas because they are weak against cold. It blooms late and the whole flower pod drops off at the end of spring.

**Somei-Yoshino Cherry**

■ Prunus Yedoensis

The Somei-Yoshino Cherry is used to measure the progress of the cherry blossom season across Japan. The faint pink blossoms make this tree an icon of spring in Japan.

**Miyabi Cherry**

■ Prunus Princess Miyabi

This cherry tree was named in commemoration of the marriage of Empress Masako. Because its parent species is the Taiwan cherry, its flowers feature a darker red color than the Somei-Yoshino Cherry.

**Amanogawa Cherry**

■ Serrulata Erecta

A broom shaped trunk, and large fragrant circular double-flowered blossoms that point towards the sky. The upward flow of the branches resembles the Milky Way (Amanogawa in Japanese).

**Flowering Peach (Hanamomo)**

■ Prunus Persica

A garden variety of peach with beautiful blossoms known as hanamomo. A subvariety called yaguchi peach is especially renowned for its large round double-flowered scarlet blossoms.

**Ukon Cherry**

■ Prunus Grandiflora

A rare cultivated variety of Oshima-Zakura that blooms from April to May with light yellow-green double-flowered blossoms.

**Kanzan Cherry**

■ Prunus Lannesiana

It is a double-flowered cherry tree. It blooms large and dark red colored. Not only does it have many petals, but it also has many flowers, and because it grows in bunches, its branches droop under its weight.

**Gyoikou Cherry**

■ Cerasus Serrulata

It produces large, double flowers with pale yellow-green petals and thick green streaks. A few days after blooming, the flowers turn yellow with a pink band and the center of the petals turn red.

**Pearlbush (Rikyubai)**

■ Exochorda Racemosa

This variety was imported from China around the end of the Meiji period. 6~10 small white flowers of 4cm, bloom on the end of each branch from April to May.

**Deshojo Maple**

■ Acer Palmatum

Also called the "Spring maple" as its sprout has a bright red color. It turns green in summer before turning red again in autumn.

**Japanese Snowball**

■ Viburnum plicatum

This deciduous shrub produces pure white ball-shaped flowers against the blue sky in early summer. It blooms about one month earlier than the hydrangea.

**Satsuki Azalea**

■ Rhododendron Indicum

Commonly found in gardens, this cultivated variety also has a wide range of colors. There are also double-flowered varieties.

## Access to Fukushima

**By Airplane** ✈️  
Osaka International airport (Itami Airport) → Sendai airport  
Approx. 1hr 15min  
\*60min from Sendai Airport to Fukushima Station by train.

**By Shinkansen** 🚄  
Shin-Osaka Sta. → Tokyo Sta. → Sendai Sta. → Fukushima Sta.  
Approx. 4hr 10min / Approx. 1hr 30min / Approx. 25min

**By Car** 🚗  
Tokyo → Sendai → Fukushima  
Approx. 4hr / Approx. 1hr

## Access to Hanamiyama

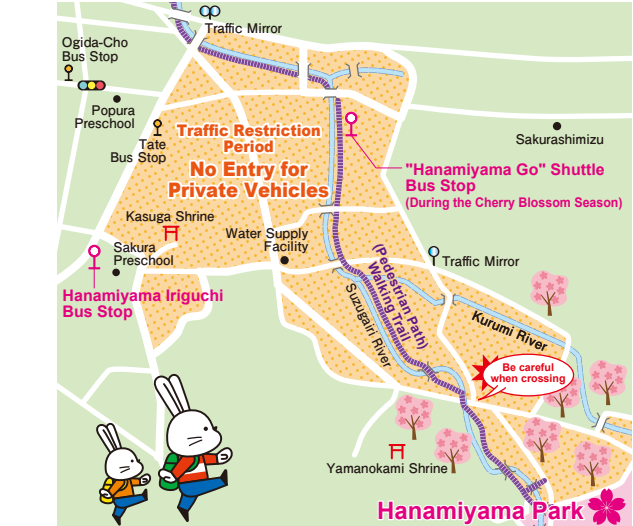
**By Bus** 🚌  
[Cherry Blossom Season] Fukushima Sta. East Exit → "Hanamiyama Go" Shuttle Bus → "Hanamiyama Go" Shuttle Bus Stop  
Approx. 15 min

[Out of Season] Fukushima Sta. East Exit → Bus Stop No.8 Route to "Watarai-Minami Mawari" → "Hanamiyama Iriguchi" Bus Stop  
Approx. 12min / \*Approx. 15 min walk

**By Taxi** 🚕  
Fukushima Sta. → Hanamiyama  
Approx. 15min

**By Car** 🚗  
Fukushima-Nishi IC → Fukushima-lizaka IC → Fukushima-Ozaso IC → Hanamiyama  
Approx. 30min each

\*Please use the temporary parking lots or the toll car park area near JR Fukushima Station during spring traffic restrictions.



**Learn more about Hanamiyama**

Hanamiyama Special Website <https://www.hanamiyama.jp/>  
\*Only Japanese version available

**Inquiries Regarding Tourism and Barrier-free Tour**

**Fukushima City Tourist Information Center**  
[JR Fukushima Station West Exit 2F]  
\*open every day of the year 9:00am to 6:00pm ☎️(024) 531-6428  
1-1, Sakaemachi, Fukushima-city, Fukushima, 960-8031 FAX: (024) 531-8165

**Useful information for every season**

Fukushima City Tourism Web Media [Fukushima City Tourism Notebook] English Information <https://www.f-kankou.jp/en/>  
\*Only Japanese version available

[Publisher]  
Fukushima City Tourism and Convention Association (DMO)  
TEL (024) 563-5554

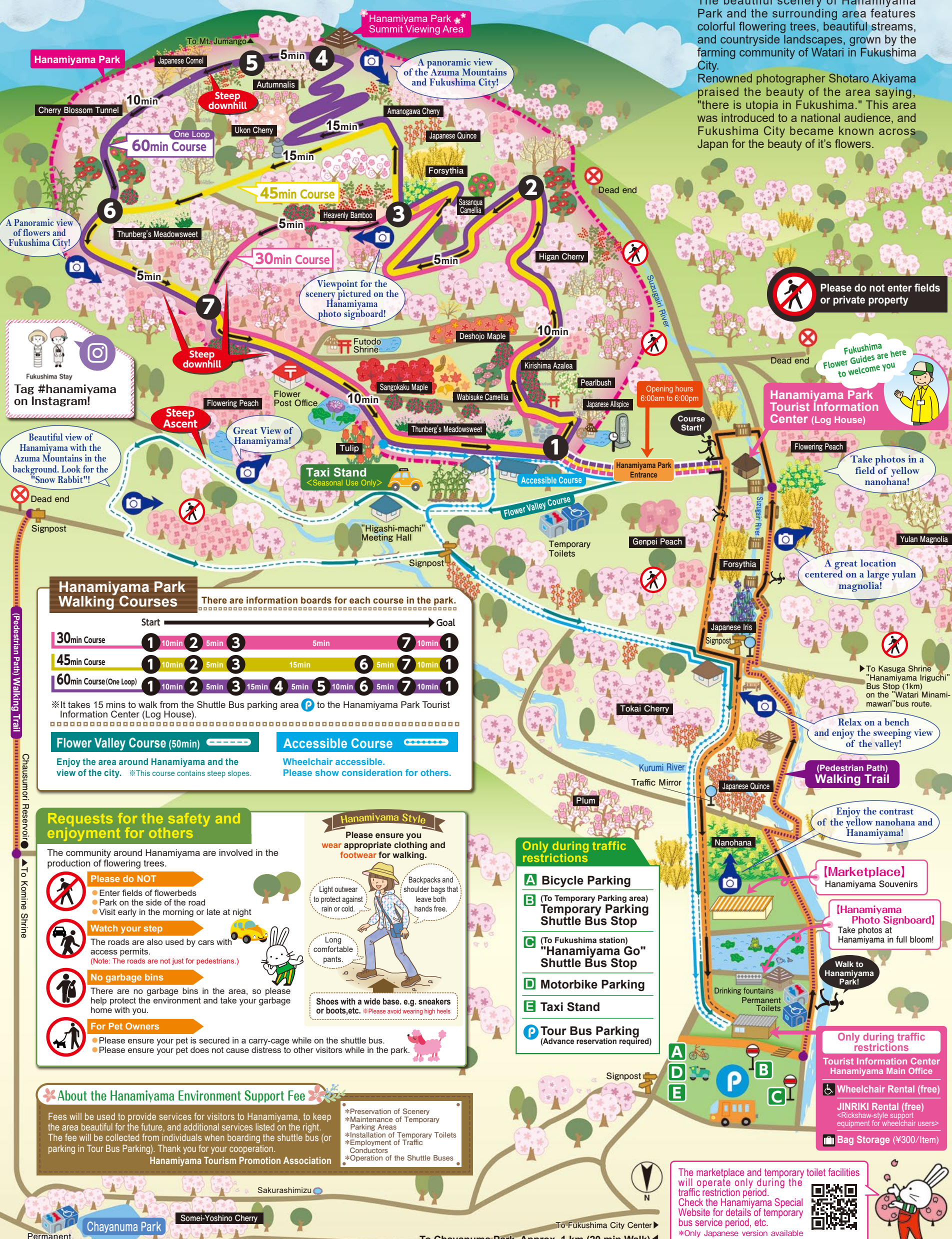


# Hanamiyama Area Spring Map

## Flower gardens around Hanamiyama

The beautiful scenery of Hanamiyama Park and the surrounding area features colorful flowering trees, beautiful streams, and countryside landscapes, grown by the farming community of Watari in Fukushima City.

Renowned photographer Shotaro Akiyama praised the beauty of the area saying, "there is utopia in Fukushima." This area was introduced to a national audience, and Fukushima City became known across Japan for the beauty of its flowers.



A Panoramic view of flowers and Fukushima City!

Fukushima Stay  
Tag #hanamiyama on Instagram!

Beautiful view of Hanamiyama with the Azuma Mountains in the background. Look for the "Snow Rabbit"!

### Hanamiyama Park Walking Courses

There are information boards for each course in the park.

| Course                  | Start | 1     | 2    | 3     | 4    | 5     | 6    | 7     | Goal |
|-------------------------|-------|-------|------|-------|------|-------|------|-------|------|
| 30min Course            | Start | 10min | 5min | 5min  |      |       |      | 10min | 1    |
| 45min Course            | Start | 10min | 5min | 15min |      |       | 5min | 10min | 1    |
| 60min Course (One Loop) | Start | 10min | 5min | 15min | 5min | 10min | 5min | 10min | 1    |

※It takes 15 mins to walk from the Shuttle Bus parking area (P) to the Hanamiyama Park Tourist Information Center (Log House).

| Course                       | Description  |
|------------------------------|--|
| Flower Valley Course (50min) | Enjoy the area around Hanamiyama and the view of the city. ※This course contains steep slopes. |
| Accessible Course            | Wheelchair accessible. Please show consideration for others.                                   |

- ### Requests for the safety and enjoyment for others
- The community around Hanamiyama are involved in the production of flowering trees.
- Please do NOT**
    - Enter fields of flowerbeds
    - Park on the side of the road
    - Visit early in the morning or late at night
  - Watch your step**
    - The roads are also used by cars with access permits. (Note: The roads are not just for pedestrians.)
  - No garbage bins**
    - There are no garbage bins in the area, so please help protect the environment and take your garbage home with you.
  - For Pet Owners**
    - Please ensure your pet is secured in a carry-cage while on the shuttle bus.
    - Please ensure your pet does not cause distress to other visitors while in the park.

### Hanamiyama Style

Please ensure you wear appropriate clothing and footwear for walking.

Light outdoor to protect against rain or cold.

Long comfortable pants.

Shoes with a wide base. e.g. sneakers or boots, etc. ※Please avoid wearing high heels.

Backpacks and shoulder bags that leave both hands free.

- ### Only during traffic restrictions
- A Bicycle Parking**
  - B (To Temporary Parking area) Temporary Parking Shuttle Bus Stop**
  - C (To Fukushima station) "Hanamiyama Go" Shuttle Bus Stop**
  - D Motorbike Parking**
  - E Taxi Stand**
  - P Tour Bus Parking (Advance reservation required)**

### About the Hanamiyama Environment Support Fee

Fees will be used to provide services for visitors to Hanamiyama, to keep the area beautiful for the future, and additional services listed on the right. The fee will be collected from individuals when boarding the shuttle bus (or parking in Tour Bus Parking). Thank you for your cooperation.

Hanamiyama Tourism Promotion Association

- ※Preservation of Scenery
- ※Maintenance of Temporary Parking Areas
- ※Installation of Temporary Toilets
- ※Employment of Traffic Conductors
- ※Operation of the Shuttle Buses

Please do not enter fields or private property

Opening hours 6:00am to 6:00pm

Hanamiyama Park Tourist Information Center (Log House)

Take photos in a field of yellow nanohana!

A great location centered on a large yulan magnolia!

Relax on a bench and enjoy the sweeping view of the valley!

Enjoy the contrast of the yellow nanohana and Hanamiyama!

Walk to Hanamiyama Park!

Take photos at Hanamiyama in full bloom!

Only during traffic restrictions

Tourist Information Center Hanamiyama Main Office

Wheelchair Rental (free)

JINRIKI Rental (free) <Rickshaw-style support equipment for wheelchair users>

Bag Storage (¥300/Item)

The marketplace and temporary toilet facilities will operate only during the traffic restriction period. Check the Hanamiyama Special Website for details of temporary bus service period, etc. ※Only Japanese version available